



KRYVYI  
RIH



CORNUCOPIA  
OF YOUR  
OPPORTUNITIES



Kryvyi Rih Raion

# Investment Growth Pole



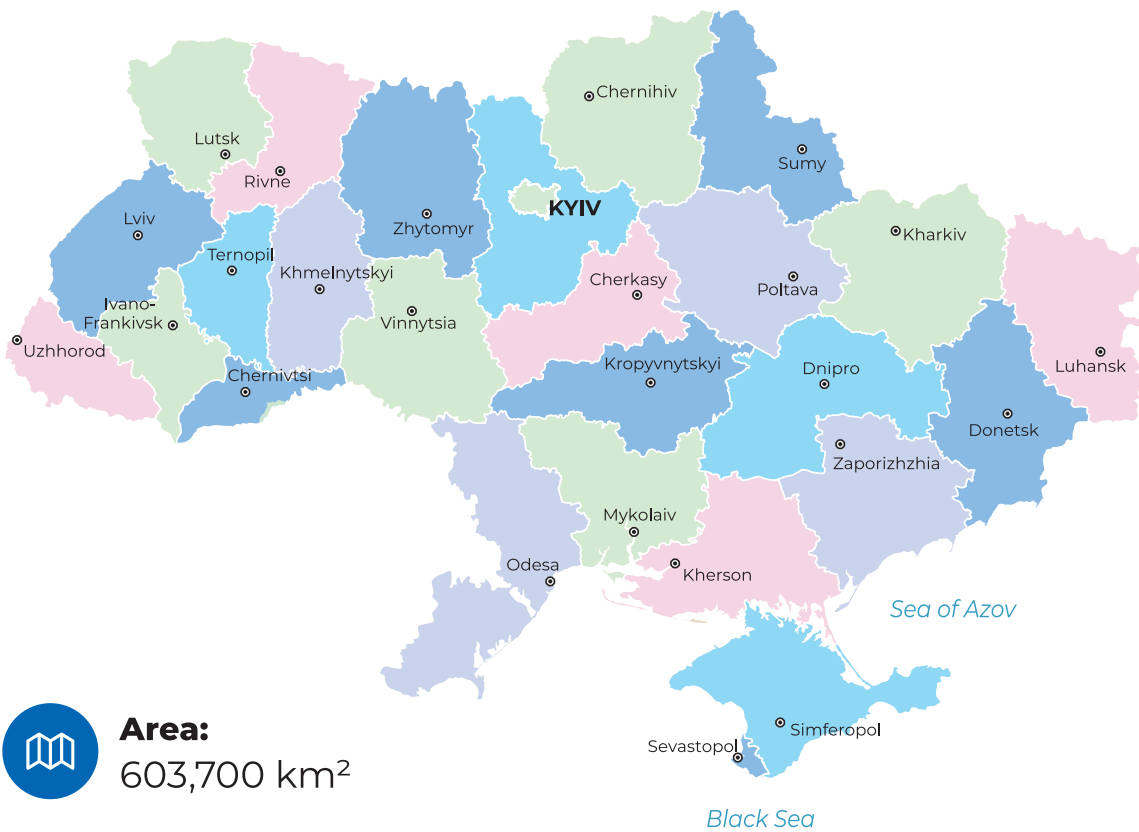
# Kryvyi Rih Raion – **Investment Growth Pole**

This catalog was developed within the framework of the project “Support for the Recovery of Kryvyi Rih Raion.” This project is funded by the Grand Duchy of Luxembourg and implemented by LuxDev (Luxembourg Development Cooperation Agency), Proman, and the Business Development Fund.

# Contents

<b>Ukraine</b> .....	6
<b>Dnipropetrovsk region</b> .....	10
<b>Kryvyi Rih raion:</b> .....	12
■ Geographical location and logistics .....	13
■ Transport infrastructure.....	14
■ Resource potential.....	16
■ Economic potential.....	18
■ Labour force .....	24
■ Educational infrastructure.....	26
<b>Taxes and Preferences</b> .....	30
<b>Useful links</b> .....	32

# Ukraine



**UKRAINE IS THE LARGEST COUNTRY IN EUROPE IN TERMS OF AREA. UKRAINE HAS THE POTENTIAL TO BECOME A LOGISTICS HUB THANKS TO ITS FAVOURABLE LOCATION, ACCESS TO DEEP-WATER PORTS ON THE BLACK SEA, AND A WELL-DEVELOPED NETWORK OF RAILWAYS AND ROADWAYS.**

Ukraine possesses abundant natural resources: fertile black soil, minerals, forests, and water resources. It has a robust transportation and energy infrastructure, a skilled workforce, and significant potential for technological development.

Integration with the European Union and strengthening cooperation with the G7 countries provide new opportunities for economic development, the implementation of modern solutions, and the transition to a green economy. Combined with financial support programmes, these processes create the basis for sustainable economic growth and rapid post-war recovery.

## Logistics



Since 2022, Ukrainian logistics routes have been integrated into the Trans-European Transport Network (TEN-T), which has significantly increased their strategic importance. Before the full-scale invasion, **60%** of exports were carried out through Black Sea ports.



The opening of new routes, the operation of the grain corridor, and the defence of the Armed Forces of Ukraine have enabled maritime grain exports to almost return to pre-war levels, reaching

**33.8 million tons**

in seven months

(September 2023 – March 2024).

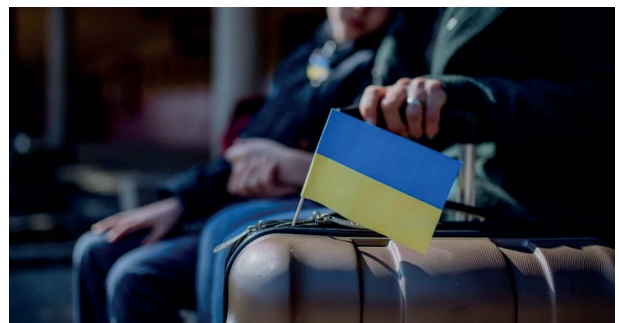
## Human capital



Despite the war and forced migration (**6.5 million** refugees and **3.34 million** internally displaced persons as of 2024), Ukraine preserves its strong human potential. In 2023, the country placed **15th** in the Global Skills Index thanks to its strong positions in computer science, data analytics, programming, and machine learning.

It ranks **55th** in the world in the Innovation Index and is among the leaders among countries with below-average income. The diaspora provides significant support: in 2021, money transfers exceeded **\$14 billion**.

**70% OF REFUGEES PLAN TO RETURN AFTER THE WAR, A THIRD OF REFUGEES AND HALF OF IDPS HAVE ALREADY RETURNED HOME.**



## Mineral resources



Ukraine is among the top 10 global producers of a number of important minerals, including titanium, iron ore, manganese, zirconium, graphite, and uranium.

### Ukraine ranks

**5<sup>th</sup>** in the world  
**in titanium production**

**5,7%** of global production

**6<sup>th</sup>** in the world  
**in iron ore production**

**3,3%** of global production

**7<sup>th</sup>** in the world  
**in manganese production**

**3,2%** of global production

**10<sup>th</sup>** in the world  
**in zirconium production**

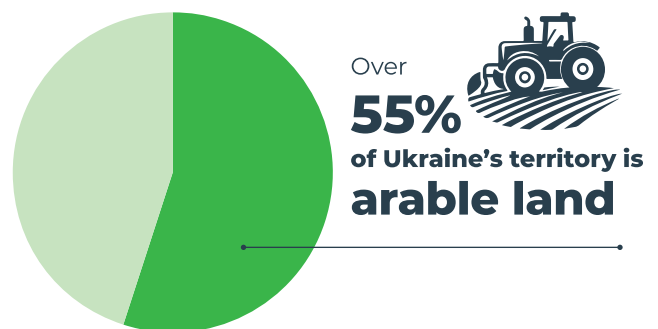
**2,0%** of global production

**This is the basis of developed metallurgy, especially ferrous metallurgy.**

## Agriculture



The country is traditionally one of the world's leading producers of grain and oilseeds.



Over 55% of Ukraine's territory is arable land. The country is traditionally one of the world's leading producers of grain and oilseeds.

In **2021/2022**, Ukraine:

- ranked first in sunflower production (**30.6%** of global production)
- ranked second in sunflower oil production (**30.6%** of global production) and meal production (**27.5%** of global production)

In 2022, the grain harvest decreased by **40%**, but in 2023, **57.9** million tons were harvested, which indicates the adaptation and resilience of the agricultural sector.

## Energy and renewable energy



Until 2022, Ukraine was one of the largest electricity producers in Europe (with a capacity of **56 GW**). Half of the electricity was provided by nuclear power plants. Wind, solar, and hydroelectric power accounted for over **20%** of electricity generated in 2023.

Ukraine also was one of the top three natural gas producers in Europe (over **20 billion cubic meters**). The country has the largest underground gas storage facility in Europe (**31 billion m<sup>3</sup>**) and an extensive transportation system covering **38,000 km**.

The country has significant bioenergy potential of up to **10 billion m<sup>3</sup>** of biomethane per year, mainly from agricultural waste.



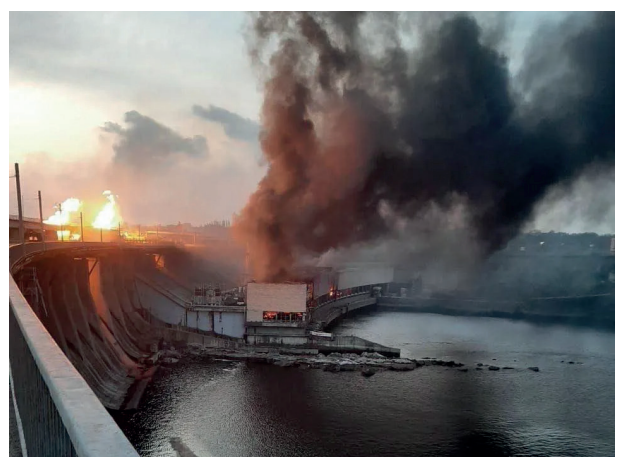
## Recovery and economic losses



**ACCORDING TO WORLD BANK ESTIMATES (EARLY 2024), DIRECT DAMAGE TO INFRASTRUCTURE AND REAL ESTATE REACHED \$152.5 BILLION.**

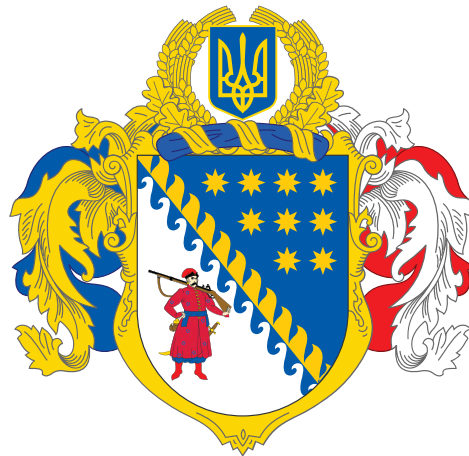
The most affected sectors were: housing, transport, industry, energy, and agriculture. Total economic losses amounted to **\$499 billion**, with reconstruction needs estimated at **\$486 billion**, of which:

- **\$278 billion** was for infrastructure
- **\$208 billion** was for the restoration of production and services



# Dnipropetrovsk region


THE DNIPROPETROVSK REGION IS A STRATEGIC CENTRE OF UKRAINE, LOCATED AT THE INTERSECTION OF KEY ROAD, RAIL, AND WATER ROUTES, INCLUDING EUROPEAN TRANSPORT CORRIDORS.



## Raions of Dnipropetrovsk region with the largest cities



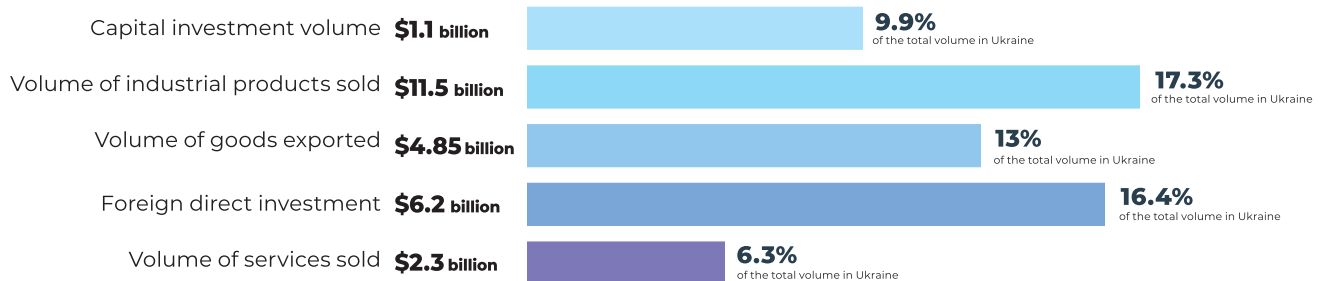
Since the start of the full-scale war, Dnipropetrovsk region has become the humanitarian, medical, security, and industrial hub of Ukraine. The region has hosted about **451,000** displaced persons and has become a key region for supporting the country's defence and economy.

**3.1 million**   
economically active people  
(8.9% of the country's population)

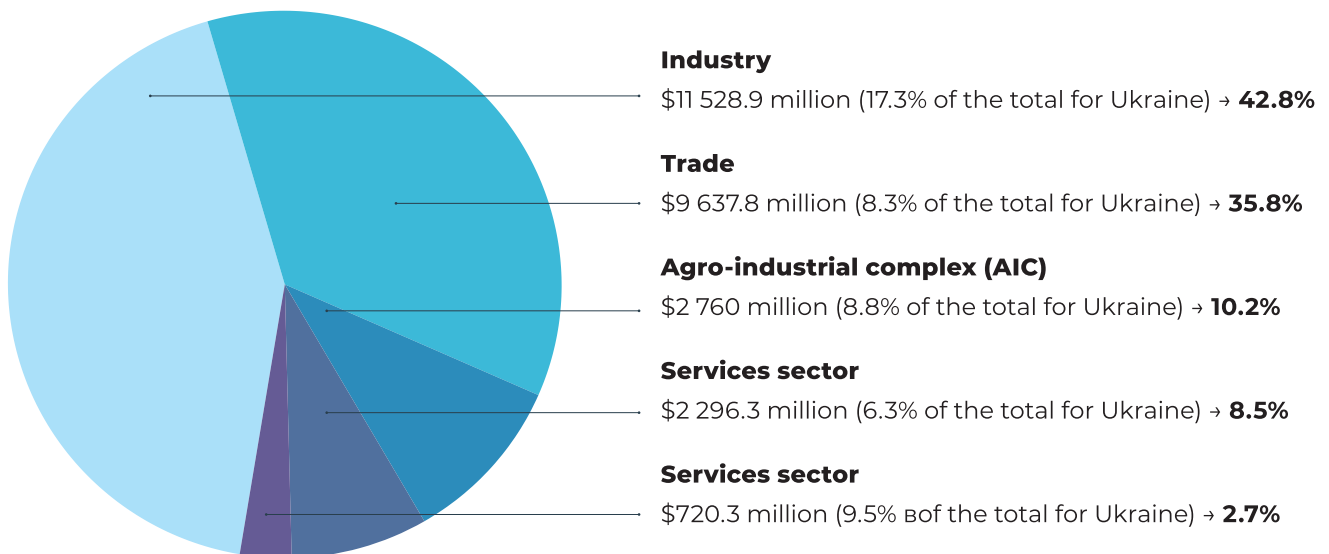
**DNIPROPETROVSK REGION IS ALSO ONE OF THE LARGEST LABOUR MARKETS IN UKRAINE**

## DNIPROPETROVSK REGION PROVIDES ABOUT 11.6% OF THE GDP OF UKRAINE AND HAS THE LARGEST REGIONAL BUDGET IN THE COUNTRY.

The region combines powerful industry and scientific research, high technology and organic production, a developed IT sector and agriculture.

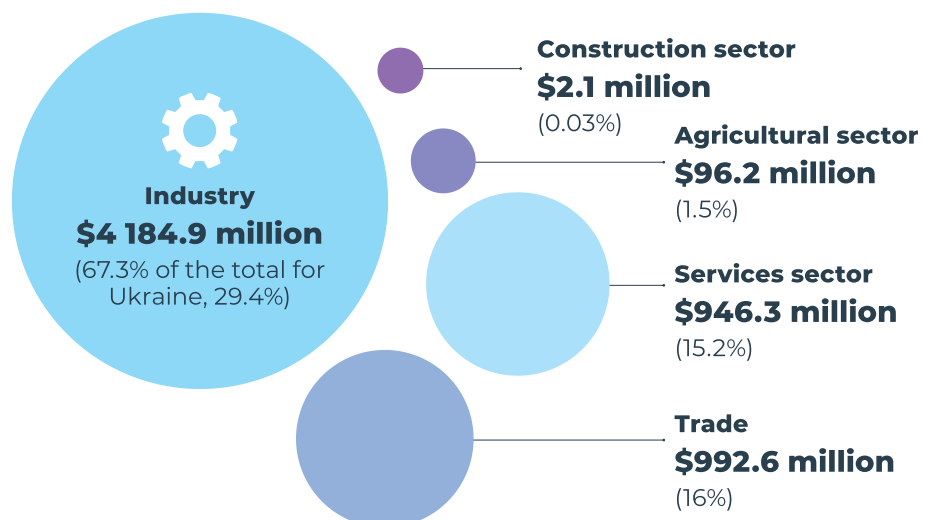


### Volume of products sold by economic sector in 2023



DNIPROPETROVSK REGION IS AN ECONOMICALLY DEVELOPED AND INVESTMENT-ATTRACTIVE REGION.

### Volume of foreign direct investment Industry



# Kryvyi Rih raion

INDUSTRIAL CENTRE AND ECONOMIC GROWTH DRIVER OF DNIPROPETROVSK REGION. THE KRYVYI RIH RAION IS ONE OF THE MOST EFFICIENT INDUSTRIAL REGIONS IN UKRAINE, COMBINING MINING, METALLURGICAL, AGRICULTURAL, ENERGY, AND INNOVATIVE POTENTIAL.



Its territory covers

**5,724.9 km<sup>2</sup>**, with a population of approximately **870,000**.

Administrative-territorial units - **278**, including:

- Cities - **3**
- Urban-type settlements - **2**
- Rural settlements - **273**

The total area of the raion is **5,724.9 km<sup>2</sup>** (18% of the region`s territory), including **4,234.124513 km<sup>2</sup>** of agricultural land and **324.141517 km<sup>2</sup>** of built-up land (residential and public buildings – **22.596799 km<sup>2</sup>**, land for industry, transport, communications, energy, defense, and other purposes – **301.544718 km<sup>2</sup>**), **217.982335 km<sup>2</sup>** of forests, **297.911582 km<sup>2</sup>** of water bodies, **98.376255 km<sup>2</sup>** - open land without vegetation cover or with insignificant vegetation cover, **9.884265 km<sup>2</sup>** - open wetlands.

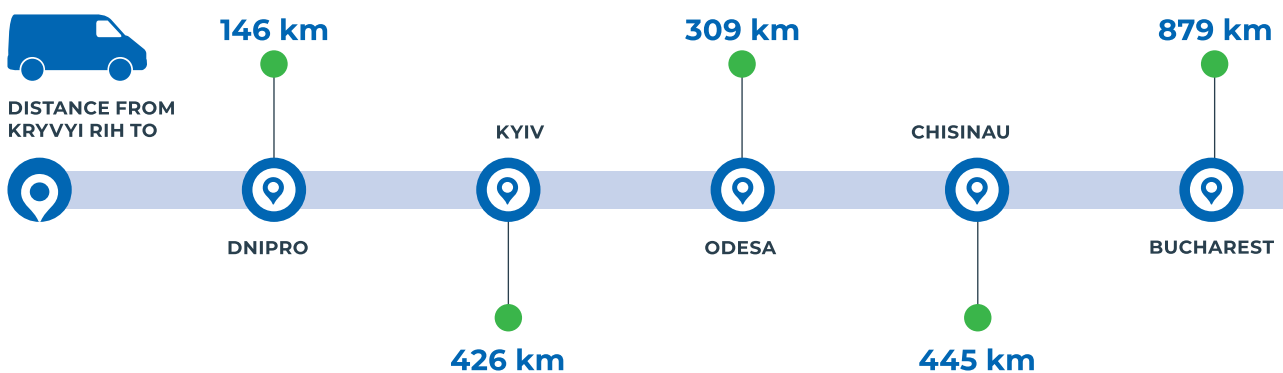
The raion consists of **15 territorial communities**, including: **Apostolove, Vakulove, Hleiuvatka, Hrechani Pody, Hrushivka, Devladove, Zelenodolsk, Karpivka, Kryvyi Rih, Lozuvatka, Novolativka, Novopillia, Nyva Trudova, Sofiiivka, and Shyroke.**

## Geographical location and logistics



THE RAION HAS A DEVELOPED TRANSPORT NETWORK AND OCCUPIES A STRATEGIC POSITION BETWEEN CENTRAL AND SOUTHERN UKRAINE.

Indicator	Characteristics
Length of motorways	over 2 100 km
Railway lines	over 320 km
Railway stations	11
Regional hubs	4
Distance to ports (Mykolaiv/Odesa)	200–320 km
Distance to international highways (M04/H11)	up to 10 km from most communities



The territory stretches from the city of Kryvyi Rih to the borders with **Mykolaiv and Kherson regions** and covers more than **300 settlements**.  
**The administrative centre is the city of Kryvyi Rih.**

Major state railways and motorways pass through its territory, providing connections to **Dnipro** (120 km), **Zaporizhzhia** (150 km), **Mykolaiv** (200 km), **Odesa** (320 km), and **Kyiv** (420 km).

# Transport Infrastructure

## Railway connections

There are 11 railway stations and 4 regional railway junctions in the Kryvyi Rih raion, providing passenger and freight transport between the raion's communities and Ukraine's main industrial centres.



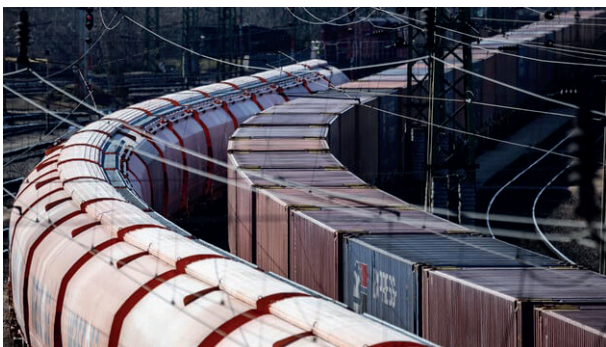
Over **320 km**

THE TOTAL LENGTH OF RAILWAY LINES WITHIN THE RAION



## THE RAILWAY NETWORK IS THE CORE OF THE RAION'S LOGISTICS INFRASTRUCTURE,

supporting the activities of the mining and metallurgical complex, construction companies, and the agricultural sector.



The railway system provides logistics for more than 40 large industrial enterprises and agricultural cooperatives located in the communities of the raion.

### The main transport routes are:



forming a single north-south transport corridor connecting the industrial areas of the raion with the Black Sea ports

## THE KRYVYI RIH RAION IS ONE OF THE MOST POWERFUL RAILWAY HUBS IN CENTRAL UKRAINE,

ensuring the continuous flow of goods and passengers between the Dnipropetrovsk, Mykolaiv, Kirovohrad, and Odesa regions.

## Road transport



THE KRYVYI RIH RAION HAS AN EXTENSIVE NETWORK OF ROADS, CONNECTING ALL COMMUNITIES IN THE RAION, AS WELL AS NEIGHBOURING REGIONS.



Over **2100 km**  
NETWORK OF ROADS

### Roads of national importance:



#### M04

passes through the northern part of the raion, connecting Kryvyi Rih with Dnipro and Kropyvnytskyi



#### H11

the main transport artery of the raion, crossing Kryvyi Rih and providing access to the ports of Mykolaiv and the Black Sea



#### T0403

connects the central and southern parts of the raion with the Mykolaiv region



EACH COMMUNITY HAS REGULAR INTERCITY BUS ROUTES TO KRYVYI RIH, DNIPRO, APOSTOLOVE, AND REGIONAL CENTRES.

THE ROAD NETWORK PROVIDES FULL TRANSPORT ACCESSIBILITY TO ALL 300+ SETTLEMENTS IN THE RAION, INCLUDING REMOTE RURAL AREAS.

The combination of high-quality road surfaces, optimal route lengths, and strategic location ensures **high population mobility and an efficient goods delivery system**, making it a competitive advantage for business.

# Resource Potential

## Mineral and raw material potential

The region is notable for its diverse mineral resources: it contains over



**50**  
types of mineral resources



**250**  
types of minerals



**100**  
rock types



Enriched ore



Magnetite



Oxidized ferruginous quartzites



**THE MOST VALUABLE DEPOSITS ARE IRON ORE, MANGANESE, REFRACTORY AND HIGH-MELTING CLAYS, QUARTZ SANDS, KAOLIN, LIMESTONES, DOLOMITES, GRANITES, LABRADORITES, AND GNEISSES.**

Other minerals — **brown coal, marble, red lead, ochre, construction sand, and loam** — form the resource base for construction, cement production, and inert materials.



## KRYVYI RIH RAION — THE LARGEST IRON ORE DEPOSIT IN EASTERN EUROPE

**The mining and metallurgical cluster includes the following leading enterprises:**

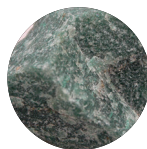
- ArcelorMittal Kryvyi Rih PJSC,
- Kryvyi Rih Iron-Ore JSC,
- Sukha Balka PJSC,
- GOK (South, North, Central, Ingulets),
- Rudomain LLC,
- Kryvyi Rig Cement PRJSC

**SIGNIFICANT MAN-MADE RESOURCES (DUMPS AND TAILINGS PONDS)  
CREATE POTENTIAL FOR THE SECONDARY USE OF RAW MATERIALS  
AND THE DEVELOPMENT OF THE PROCESSING INDUSTRY.**



The **15 communities of the Kryvyi Rih** raion have concentrated resources for the development of production chains for extraction, processing, and construction, primarily thanks to deposits of brown coal, construction sand, loam, marble, ochre, and red lead.

### The most famous deposits of colored stones



Aventurin



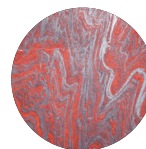
Garnet



Calcite



Amethyst



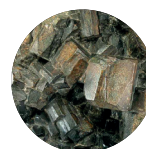
Jaspillite



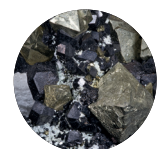
Limonite



Quartz



Cordierite



Magnetite

# Economic potential



## KRYVYI RIH City as a pillar of growth

**KRYVYI RIH IS THE INDUSTRIAL LEADER OF THE DNIPROPETROVSK REGION AND ONE OF THE KEY DRIVERS OF THE UKRAINIAN ECONOMY.**

The critical mass of business and industry creates a multiplier effect for the raion and region: the city is a hub for capital, investment, and labour force, and a defined regional pillar of growth.

### Key indicators:

**42.7** thousand business entities, including **12.7 thousand** legal entities (**29.7%**) and **30.0 thousand** individual entrepreneurs (**70.3%**).

### Business structure:

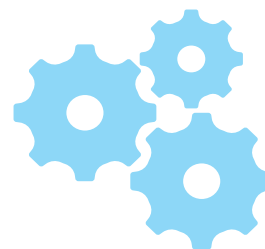
- LLCs — **47.6%**
- Private enterprises — **22.1%**
- Public organizations — **14.4%**
- Cooperatives — **7.2%**
- Trade unions — **4.0%**
- Charitable organizations — **2.4%**
- Political parties — **1.5%**

### Share of Kryvyi Rih in industrial production:

- Before 01.01.2022 — **7.4%** (Ukraine)
- During military operations — **20.0%** (Ukraine)
- Within the structure of Dnipropetrovsk region — **42.7%**.

### Industrial profile:

ferrous metallurgy, engineering, building materials, chemical, printing, woodworking, light, and food industries.



### City-forming industries:

mining and metallurgy.

**UAH 177.5 BILLION —  
VOLUME OF INDUSTRIAL  
PRODUCTS SOLD.**

## Land structure



Land structure  
(Kryvyi Rih community), hectares:

- Open-pit mining — **9,714**
- Industry — **6,392**
- Residential development — **3 910**
- Open land without vegetation cover — **3,461**
- Agriculture — **3,391**
- Forestry — **2,677**
- Transport, communications — **2,752**
- Public use — **2,572**
- Recreational — **2,027**
- Under railways — **557**
- Technical infrastructure — **216**



## Urban economic framework



### THE CITY DEMONSTRATES A HYBRID MODEL: SERVICE AND TRADE FRAME OVER AN INDUSTRIAL CORE —

short monetization cycle, high turnover, rapid scaling of commercial models.

### Top segments:

- Wholesale and retail trade — **35.3%**
- Other services (repair, household, personal) — **11.1%**
- Information and telecommunications — **9.3%**
- Administrative and support services — **6.8%**
- Professional, scientific, and technical activities — **6.6%**
- Processing industry — **5.8%**
- Real estate operations — **4.5%**
- Transport and warehouse logistics — **4.2%**
- Supply of electricity, gas, steam, and conditioned air — **4.1%**
- Education — **3.8%**
- Temporary accommodation and catering (HORECA) — **3.5%**
- Healthcare and social assistance — **3.0%**



### Smaller but strategic segments

- Mining industry — **301**
- Water supply and waste management — **157**
- Public administration — **136**
- Agriculture — **64**
- Construction — **36**
- Households as employers — **15**
- Extraterritorial activities — **3**

## Industrial core of the city

- Processing industry — **5.8%**
- Transport and warehouse logistics — **4.2%**
- Supply of electricity, gas, steam, and conditioned air (energy segment) — **4.1%**
- Professional, scientific, and technical activities — **6.6%**
- Administrative and support services — **6.8%**



**KRYVYI RIH HAS A WELL-ESTABLISHED INDUSTRIAL CORE BASED ON A COMBINATION OF PROCESSING INDUSTRIES, A LOGISTICS FRAMEWORK, ENERGY STABILITY, AND A HIGH CONCENTRATION OF PROFESSIONAL AND TECHNICAL SERVICES.**

This configuration provides a complete production cycle with internal support: **production → energy continuity → logistics implementation → service and engineering support.**

This makes the city a territory of rapid operational implementation of investments, scalable industrial development, and high conversion into real economic results.



## Food and processing industry of the city

- Dairy — **7.5%**
- Meat — **12.5%**
- Seeds — **10.0%**
- Confectionery — **12.5%**
- Bread and bakery products — **25.0%**
- Others — **32.5%**



# Kryvyi Rih Raion — Growth multiplier

THE RAION'S AGRICULTURAL SECTOR — A SCALED MULTIPLIER FOR SMES AND PROCESSING: BLACK SOIL, A DENSE NETWORK OF FARMERS, AND "SHORT" LOGISTICS MAKE INVESTMENTS IN STORAGE, SMALL-SCALE PROCESSING, AND WATER SOLUTIONS MOST EFFECTIVE.

## Production and land use structure:

The raion has a strong raw material base with a distinct vertical integration from the field to the store shelf: dense concentration of primary production + existing processing capacities (flour and cereal mills, milk processing, dynamic poultry farming, a significant oil and fat industry).



## Structure of agricultural entities:

- Raw material base — **≈ 82%** of the total.
  - Cereals/legumes/oilseeds — **74%** of all agricultural entities.
  - Vegetables and melons — **1.7%**  
other annuals/biennials — **0.5%**.
  - Gardens and niches: pome/stone fruits — **0.2%**;  
berries/nuts — **0.1%**; spices/medicinal plants — **0.2%**;  
other perennials — **0.1%**; nurseries — **0.1%**.
- Total crop production — **≈ 77%**.

- Livestock and mixed farming — **≈ 2.3%**  
(cattle (dairy) — **0.5%**; pig farming — **0.3%**;  
poultry farming — **0.5%**; other animals — **0.3%**;  
mixed farming — **0.8%**).

- Services and support activities — **≈ 1.1%**  
(support activities in crop production — **1.0%**;  
in livestock farming + seed production — **0.1%**).
- Water resources — **≈ 1.0%**  
(freshwater fishing — **0.6%**; aquaculture — **0.3%**).
- Primary processing — **≈ 0.7%**  
(canning of fruit and vegetables — **0.2%**;  
milk — **0.1%**; flour and cereals — **0.4%**).
- Processing industry in the raion — **≈ 18%**:  
flour and cereals — **0.7%**; milk processing — **0.7%**;  
poultry farming (expanded) — **0.7%**; oil and fat  
industry — **≈ 10%**; other related areas (meat, bread,  
beverages, confectionery) — **≈ 5%**.

## Value chain

**Cultivation (cereals/oilseeds → vegetables/ niche crops) → primary services (soil cultivation, seeds) → livestock farming (milk/ meat/poultry) → processing:**

- Flour and cereals (cereals, flour, mixed feed);
- Dairy (milk, fermented milk products, cheese);
- Oil and fat (oil, meal);
- Canned vegetables and fruit.

The model allows covering local food needs and forming export-oriented batches.

**82%** — primary agricultural raw materials (strong production base).

**≈18%** — processing/food industry (closing the cycle within the raion).

**The largest segment** — grain and oil (almost ¾ of the cluster) — forms a stable raw material base for processing.

## SEGMENTS OF SUSTAINABLE GROWTH: POULTRY FARMING; OIL AND FAT INDUSTRY; FLOUR AND CEREAL SEGMENT.



The raion has all the prerequisites to transition to a model with high added value and a closed regional food cycle. This creates a predictable cycle for investors — **City drives / District scales** — with quick entry into the city and scaling across the raion.

## Potential areas of development:

- Expansion of fruit and vegetable processing (canned goods, juices, freezing)
- Formation of a dairy “cold chain” (collection, cooling, packaging)
- Expanding aquaculture and fish processing;
- SME cooperation (shared equipment, warehouses, logistics, sales).

## Key trends:

- Land restoration after mining and hostilities; local land amelioration/water supply
- Technological advancement (precision farming, moisture/nutrition control, park renewal amidst staff shortages)
- Focus on local processing (oil, cereals, honey) to reduce logistical risks
- Risk diversification (crop insurance; combined logistics — rail + road).

## Investment niches:

- Storage facilities/elevators, drying, processing (energy-saving technologies)
- Small-scale processing (cereals, flour, packaging, cold-pressed oil, honey products)
- Livestock farming + biogas (**waste/ pulp → energy/heat** for drying)
- Land amelioration, irrigation, water supply;
- Cooperative models (shared equipment, sales, export batches).

# Labour force

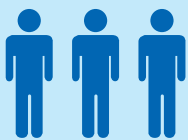
## City as the core. Raion as the scale.

THE KRYVYI RIH RAION HAS A POPULATION OF APPROXIMATELY 740,000, OF WHICH APPROXIMATELY 630,000 LIVE IN THE CITY OF KRYVYI RIH.

The city accounts for **≈81.5%** of the raion`s population and **19.5%** of the population of the Dnipropetrovsk region, remaining a key center of economic activity in the region.



There are about **80,000 internally displaced persons** registered in Kryvyi Rih, which significantly affects the labour market, expanding both the **supply of labour and the demand for jobs.**



THE POPULATION DENSITY IS 135 PEOPLE PER KM<sup>2</sup>, WHICH IS ONE OF THE HIGHEST INDICATORS AMONG THE RAIONS OF THE REGION.

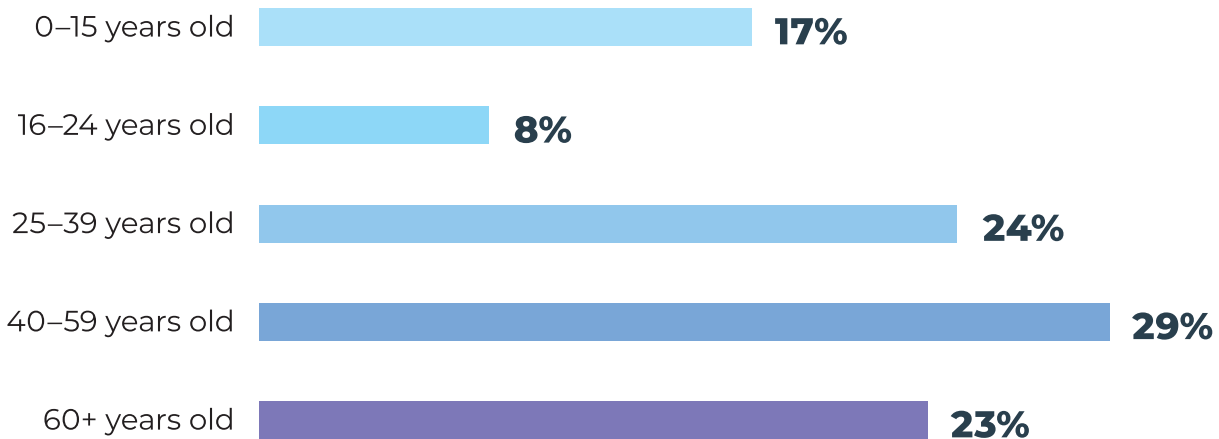
## Regional labour market

There are about **3.1 million economically active residents** in the Dnipropetrovsk region. Kryvyi Rih forms the core workforce of the raion and provides a **significant share of the region`s labour potential**, while the surrounding communities provide a **reserve and space for employment expansion.**



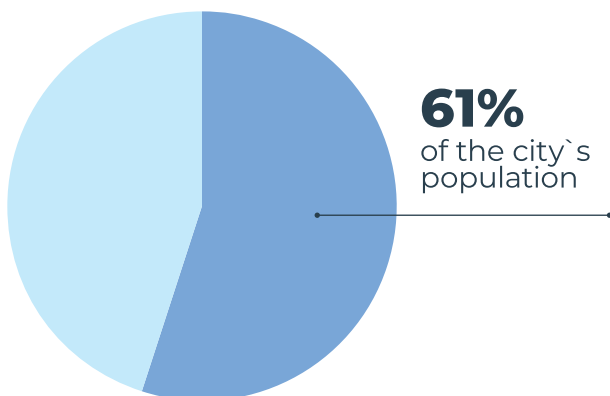
## Demographic profile of Kryvyi Rih

Age structure (Kryvyi Rih)



## Working-age population

(≈16–59 years old)

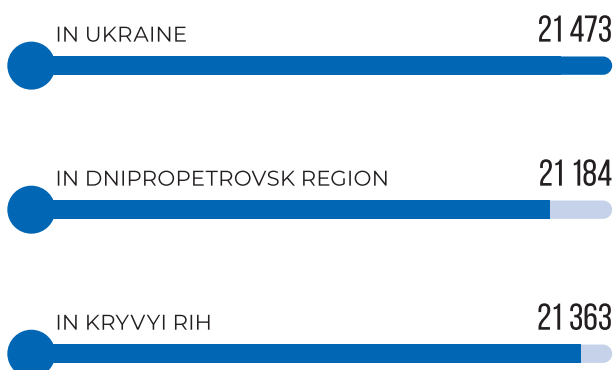


## Migration dynamics:

The integration of internally displaced persons contributes to the restoration of labour resources. **36%** of those registered at the employment centre **are already employed.**

## AVERAGE MONTHLY SALARY OF EMPLOYEES, UAH

(as of January 1, 2025)



## Demographic profile of communities

Fifteen communities in the Kryvyi Rih raion concentrate the **labour reserve and potential for resettlement of personnel** for large and medium-sized enterprises. Satellite towns and rural communities play a key role in **balancing staff mobility and labour availability** for the industrial core of Kryvyi Rih.

# Educational infrastructure

**Kryvyi Rih** is a growth center that shapes the human resources development model for the entire raion. The city concentrates key educational infrastructure, sets technical training standards, and ensures the formation of engineering and industrial competencies for the future.

**The Kryvyi Rih raion** serves as a multiplier of this potential, providing a wide geography of educational opportunities, expanding the human resources supply, and creating a basis for scaling economic recovery programs.



## THIS MODEL ALLOWS FOR THE DEVELOPMENT OF LONG-TERM DEVELOPMENT CHAINS IN KEY GROWTH AREAS:

- Development of a “smart city” 01
- Support for the transition of military personnel to civilian professions and entrepreneurship 02
- The formation of new businesses 03
- The restoration of industrial production 04
- The development of processing and engineering and manufacturing solutions 05



Kryvyi Rih is the **core of the formation of a sustainable professional offer**, and the raion is a **tool for scaling it up** over the next 10–15 years. Together, they create a predictable growth model based on the region’s actual ability to prepare personnel for production, restoration, and the new economy.



**Educational network of the Kryvyi Rih raion**

**170**

General secondary education institutions

**217**

Preschool education institution

**40**

Extracurricular education institutions

**6**

Higher education institutions

**17**

Vocational education institutions

**17**

Pre-higher vocational education institutions

**4**

Inclusive resource centers

# Vocational and technical education hub

## As a key multiplier of the potential of the raion

**Vocational and technical education** is a crucial element of the Kryvyi Rih Raion`s operational model. It ensures the direct involvement of graduates in the production processes of the mining and metallurgical complex, the construction industry, engineering services, and energy.



Vocational education forms a personnel reserve for **rapid scaling up of investment programs, restoration projects, donor initiatives, and industry clustering.**

**IT IS A FLEXIBLE MECHANISM THAT PROVIDES THE RAION WITH QUALIFIED SPECIALISTS ACCORDING TO THE NEEDS OF THE ECONOMY.**



## Main areas of training:

- Mining
- Construction and civil engineering
- Industrial engineering
- Applied mechanics
- Power engineering, electrical engineering, and electromechanics
- Automotive technologies
- Applied IT
- Production process engineering



# Higher education

## The core of intellectual and engineering potential

THE HIGHER EDUCATION SEGMENT IN KRYVYI RIH PROVIDES TRAINING FOR HIGHLY QUALIFIED SPECIALISTS IN ENGINEERING, TECHNOLOGY, IT, AND ECONOMICS.

The city`s universities shape the **competencies of the future** — the ability to work in conditions of industrial modernization, the launch of new production lines, digital transformation, innovation project management, and the development of local market ecosystems.



HIGHER EDUCATION IS THE FOUNDATION FOR LONG-TERM ECONOMIC GROWTH IN THE RAION, PROVIDING A STEADY FLOW OF PERSONNEL FOR INDUSTRY, ENTREPRENEURSHIP, AND PUBLIC ADMINISTRATION.



## Key areas of training:

- Mining and metallurgy
- Construction and civil engineering
- Machinery and production process engineering
- Electrical power engineering and electrical engineering
- Information technology and applied programming
- Economics, finance, management, and entrepreneurship
- Pedagogical education, natural sciences, and liberal arts



# Taxes and tax preferences

## Main Taxes

---

- Income tax: **18%**
- Value added tax (VAT): **20%**
- Single social contribution: **22%** of the wage fund
- Personal income tax: **18%** of wages
- Real estate tax: **up to 1.5%** of the minimum wage per 1 m<sup>2</sup>
- Land tax: **1–12%** of the regulatory monetary value of land



## Tax preferences

---

### Exemption from VAT (20%)

- Supply of IT products — operating, system, entertainment, and educational programs and their components, Internet services, access, and updates.
- Supply of R&D results for aircraft manufacturing.
- Import of goods used in aircraft manufacturing to Ukraine.

### Exemption from income tax (18%)

- Enterprises — aircraft manufacturers.
- Participants in **industrial parks** (for a period of 10 years in accordance with specified types of activities).
- Investors implementing **projects with significant investments** (from €20 million, more than 80 new jobs, implementation period — up to 5 years).

## Additional tax benefits

- Import of goods brought in by foreign investors under the Law of Ukraine “On the Regime of Foreign Investments” for the purpose of making investments or contributing to the authorized capital.
- Scientific, laboratory, and research equipment for the development of industrial, scientific, and scientific-technical parks.
- Equipment powered by **renewable energy sources**, energy-efficient materials and installations.
- Equipment for the production of **alternative fuels or energy** from alternative sources.
- Materials, assemblies, units, and components for **agricultural machinery manufacturing** (for the production of machinery and equipment for the agro-industrial complex).

## Local tax preferences

### (granted by decision of local authorities)

- Exemption from or reduction of property tax.
- Land tax exemptions.
- Land rent exemptions.

## IMPORTANT: BENEFITS APPLY IF SIMILAR EQUIPMENT IS NOT MANUFACTURED IN UKRAINE.



## State support for industrial parks

- Compensation of **up to 50%** of the expenses for connecting to the power grid.
- Compensation of interest payments on loans — **from 30% to 70%**.
- Partial compensation of investment expenses — **from 15% to 70%**.





## Useful links

---



Website of the Kryvyi Rih City Council  
and its executive committee

**<https://kr.gov.ua/>**



Kryvyi Rih Raion State Administration

**<https://krrda.dp.gov.ua/>**

## For investors

---



Projects of communities in the Kryvyi Rih Raion are  
available on the website

**<https://dream.gov.ua/ua>**



Investment platform of Kryvyi Rih

**<https://invest.kr.gov.ua/uk>**



Kryvyi Rih City Development Institution

**<https://irm.kr.ua/>**



Dnipropetrovsk Regional Investment Agency (DIA) –  
support in the implementation of private business  
investment projects in the Dnipropetrovsk region.

**<https://dia.dp.gov.ua/>**

---

The catalog uses information obtained from official open sources, state and municipal resources, in particular: [dia.dp.gov.ua](https://dia.dp.gov.ua), [krrda.dp.gov.ua](https://krrda.dp.gov.ua), [kr.gov.ua](https://kr.gov.ua), official investment and strategic materials at the regional and local levels, official websites of enterprises, as well as other open public sources. All data is provided for informational and presentation purposes only and does not constitute financial, legal, investment, or tax advice.